

Specifications

備注 (Remark)

1. 材料 (Material)

膠芯: PA9T/LCP+30%G.F UL94V-0, 顏色: 黑色

Housing: PA9T/LCP+30%G.F UL94V-0, Color: Black

端子: 黃銅

Contact: Brass

2. 特性 (characteristics):

額定電流: 1.0AMP

Rating Current: 1.0AMP

接觸阻抗: 20mΩ Max

Contact Resistance: 20mΩ Max

絕緣阻抗: 1000MΩ Min

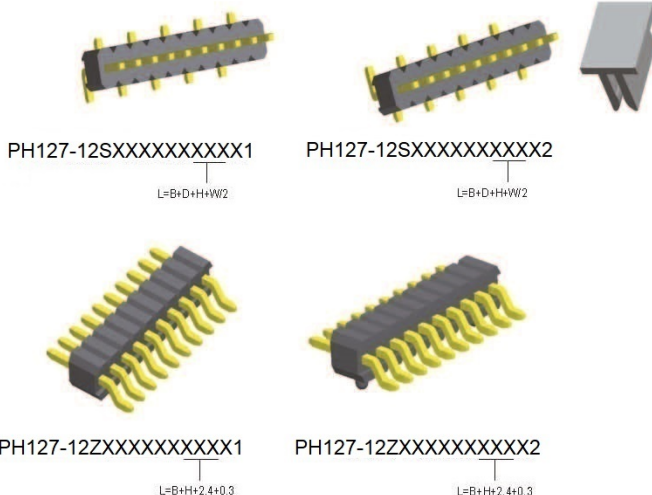
Insulating Resistance: 1000 MΩ Min

耐電壓: AC 500V/分鐘

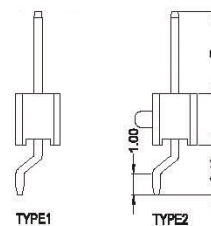
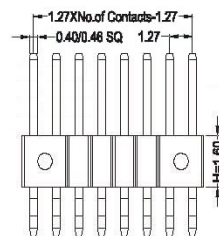
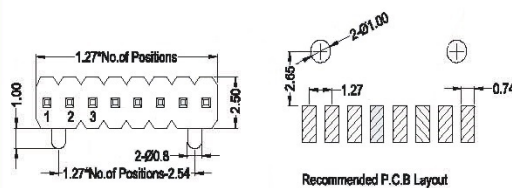
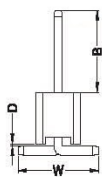
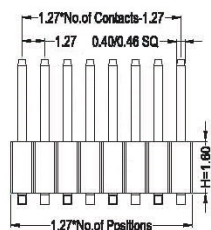
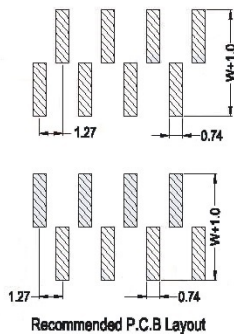
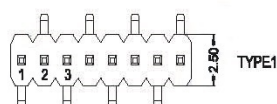
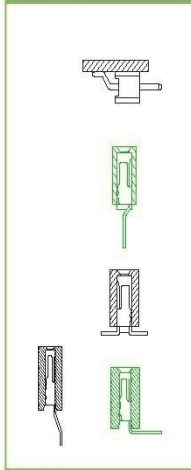
Withstanding Voltage: AC 500V/Minute

溫度範圍: -40° C to +105° C

Temperature Range: -40° C to +105° C



Mating With/配對母座:



Dimension alternatives list				
ITEM	B	D	W	H
Standard	1.8/3.0/4.0/6.0	0.1	4.50	1.8 1.7
Alternate				2.0 2.5

Dimension alternatives list		
ITEM	B	H
Standard	1.8/3.0/4.0/6.0	1.8 1.7
Alternate		2.0 2.5

PH127-12

X

XX

XX

XXX

X

X

X

Contact Shape
S: SMT
Z: 90° SMT

No. Of Pins Per Row
02~50P

Contact Plating
Full Of Gold
G0=0.8u"
~
G9=30u"
S1=Ordinary Tin Plated
S2=Matte Tin Plated
S3=Tin-plated High-temperature

Length Of Terminal

Packing
A: PE Bag
R: Tape & Reel
C: Tube
T: Tube+CAP
E: Tray

Journal Number
1: Type1 (without Post)
2: Type2 (with Post)

Pin Number
A: 0.40 SQ
B: 0.46 SQ